



# GMT MONTHLY MEMBERSHIP PROGRESS REPORT

Results as of: 2/29/2020

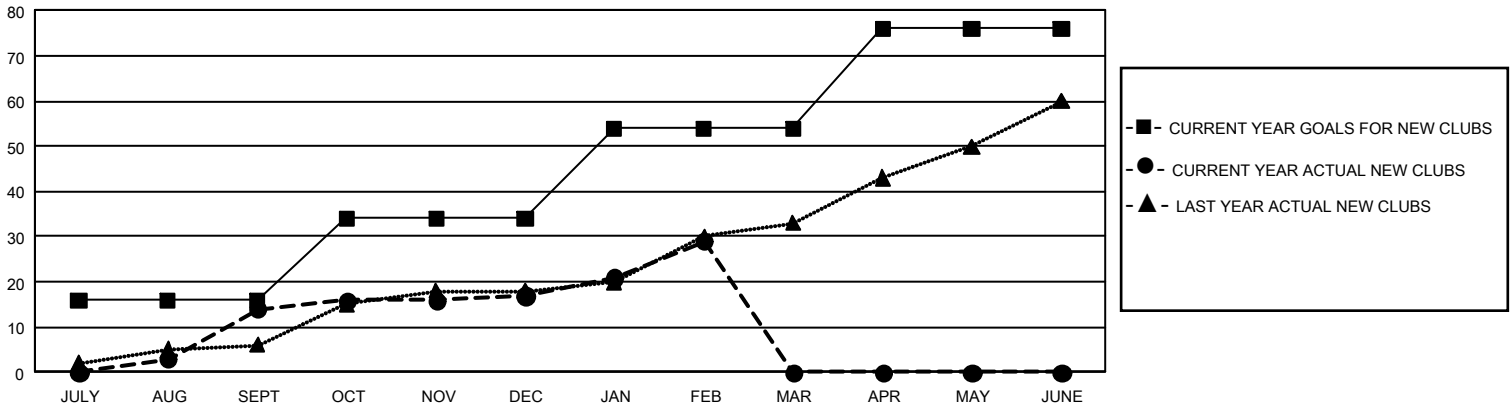
## GMT Constitutional Area 5 - E, Group O

GMT: OPEN

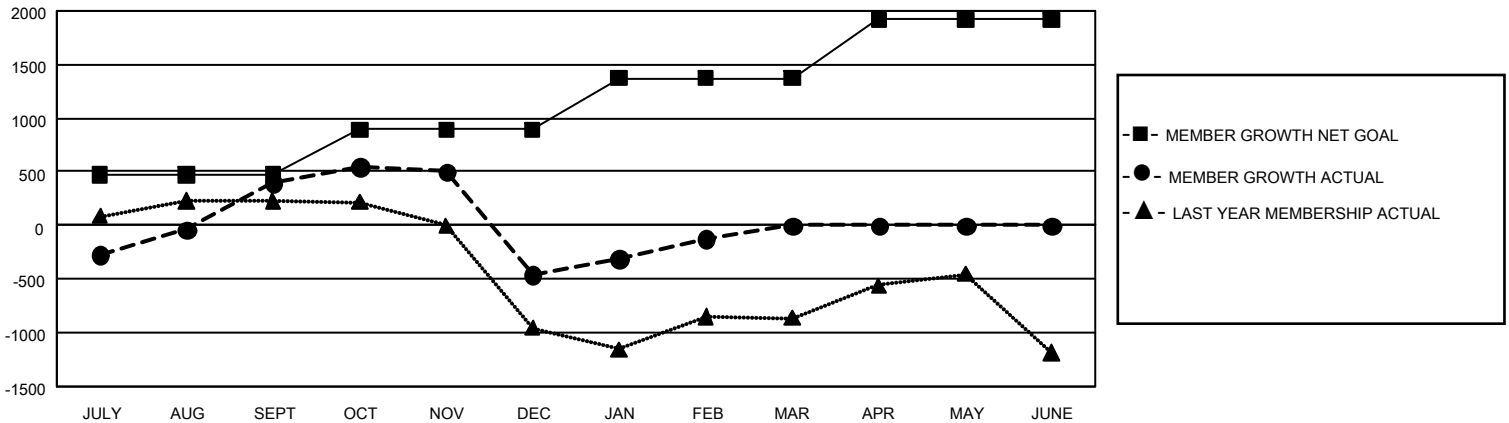
REPORT DOES NOT INCLUDE CLUBS IN UNDISTRICTED AREAS.

Clubs				Members			
RESULTS FOR 2019-2020				RESULTS FOR 2019-2020			
QUARTER	NEW CLUB GOAL	NEW CLUBS	DROPPED CLUBS	QUARTER	MEMBER GROWTH NET GOAL	MEMBER GROWTH ACTUAL	DROPPED MEMBERS ACTUAL (including transfers)
JULY/AUG/SEPT	48	14	18	JULY/AUG/SEPT	1,410	1,441	917
OCT/NOV/DEC	54	3	16	OCT/NOV/DEC	1,275	732	1,559
JAN/FEB/MAR	60	12	4	JAN/FEB/MAR	1,440	1,126	415
APR/MAY/JUNE	66	0	0	APR/MAY/JUNE	1,635	0	0

**GOALS AND ACTUAL NEW CLUBS CUMULATIVE**



**GOALS AND ACTUAL MEMBERS CUMULATIVE**



<b>DROPPED CLUBS: 38</b>	<b>380 CLUBS OF 677 ADDED 1 OR MORE NEW MEMBERS</b>	<b><u>GENDER DISTRIBUTION</u></b> MALE            10,846 (50.76%) FEMALE        10,520 (49.24%)
<b><u>DROPPED MEMBERS</u></b> DECEASED            57 CLUB CANCELLED    891 OTHER                1,927 <hr/> TOTAL                2,875	<a href="#">CLICK HERE FOR CUMULATIVE MEMBERSHIP DATA</a>	TOTAL FAMILY UNIT MEMBERS            7,400 FAMILY MEMBERS PAYING HALF DUES    4,503